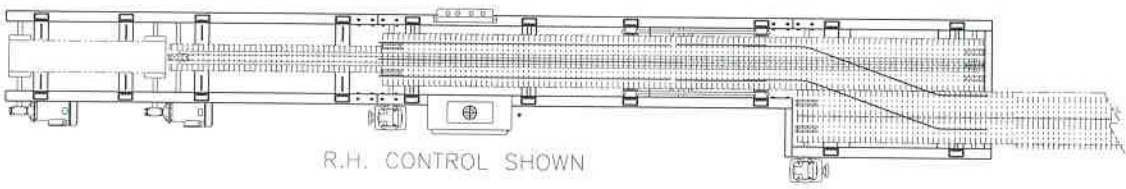
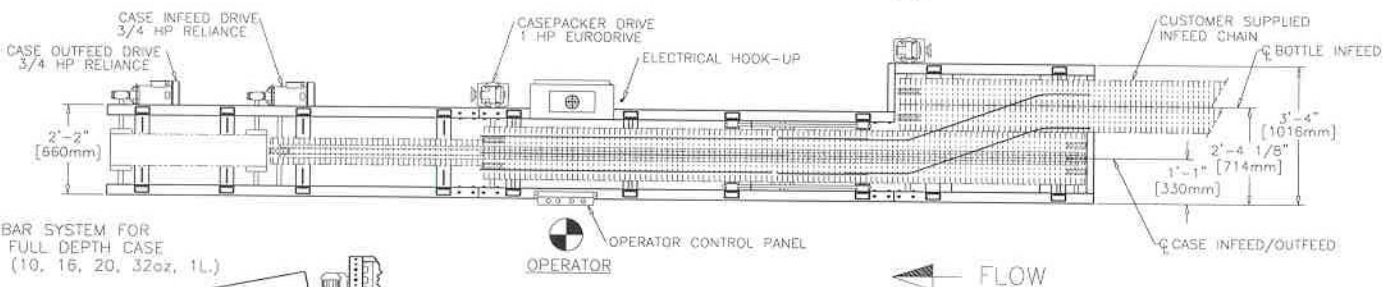


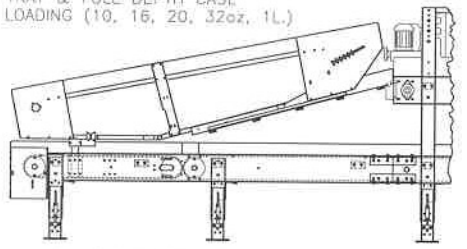
ITEM	PART NO. LH	PART NO. RH	SHT	QTY	PART DESCRIPTION AND/OR MATERIAL
------	-------------	-------------	-----	-----	----------------------------------



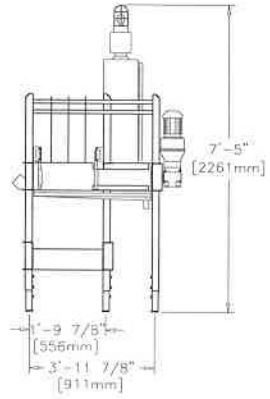
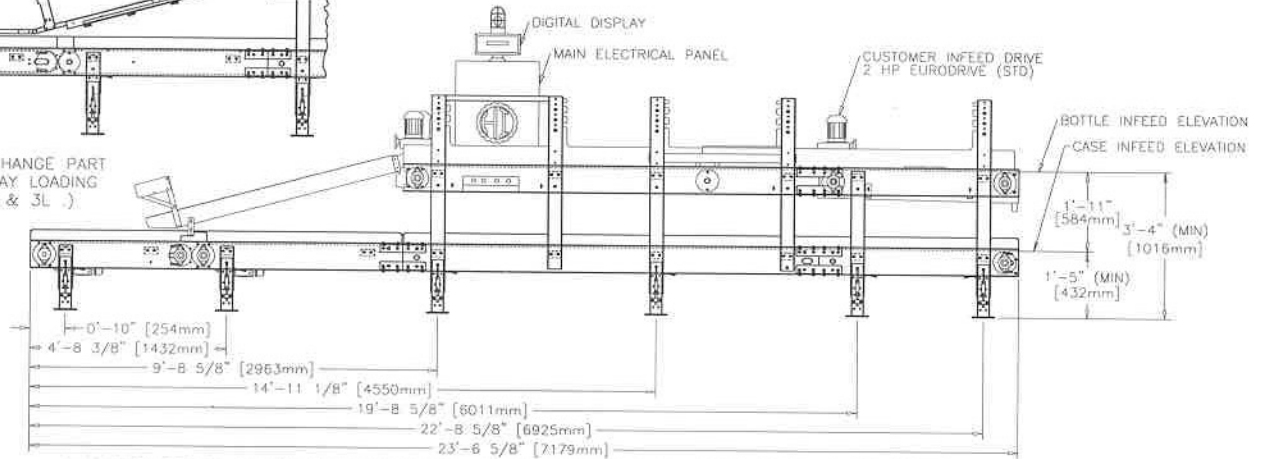
ELECTRICAL
 230/460 VOLTS
 (OTHERS AVAILABLE)
 3 PHASE
 50/60 HZ
 30 AMPS MINIMUM
AIR SUPPLY
 AIR CONSUMPTION
 MINIMAL
WEIGHT
 APPROX 4200 Lbs
 [1905 Kg]



FLIGHT BAR SYSTEM FOR TRAY & FULL DEPTH CASE LOADING (10, 16, 20, 32oz, 1L.)



CHUTE CHANGE PART FOR TRAY LOADING (1, 2, & 3L.)



HARTNESS INTERNATIONAL CONTINUOUS MOTION PACKER
 L.H. MACHINE OFFSET OPPOSITE CONTROL SIDE SHOWN

THIS DRAWING IS FOR PRELIMINARY PURPOSES ONLY. ARRANGEMENT, DIMENSIONS AND COMPONENTS SUBJECT TO CHANGE WITH FINAL DESIGN.

FEDDCCBA



P.O. BOX 36529 1200 CARLINGTON ROAD
 GREENVILLE SOUTH CAROLINA 29616 USA

VOL
 NONE
 12-9-93

Q:\26\PROPOSAL.p-1326.dwg
 DRAWING STATUS: CURRENT
 REPLACED BY:

MOCONNOR
 TTP

CP2600 DEDICATED CONT. MOTION PACKER
 SURFACE ROUGHNESS



CA 1 OF 1
 NO.