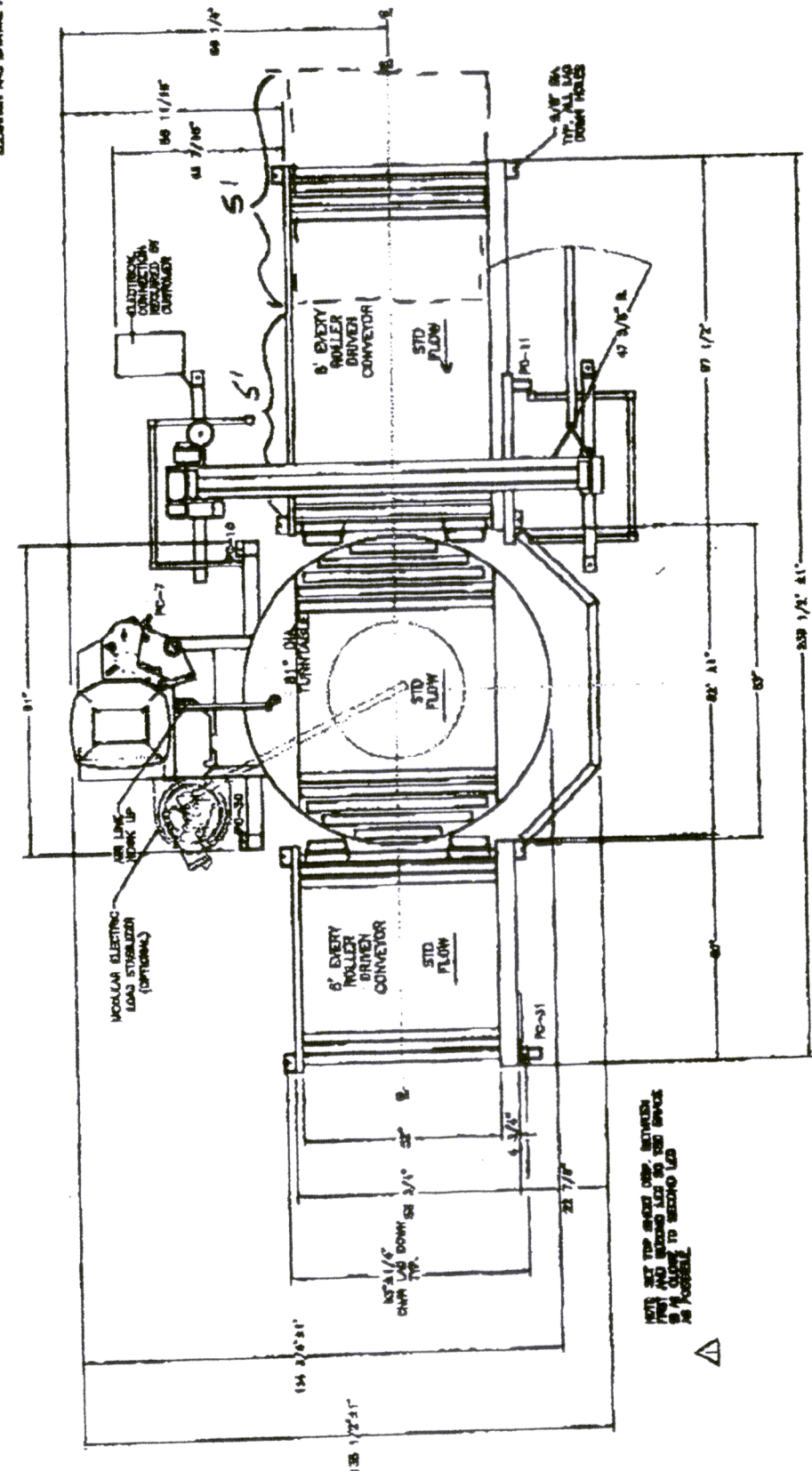


- 1) ALL DIMENSIONS ARE APPROXIMATE. QUANTITIES APPROXIMATE AND SUBJECT TO DIMENSIONAL CHANGES IN EFFECT AT THE TIME OF MANUFACTURE.
- 2) POWER CONNECTION TO CONTROL PANEL DISCONNECT AT:
  - A) 350V 3PH 4W 60HZ 30 AMP.
  - B) 480V 3PH 4W 60HZ 30 AMP.
  - C) 480V 3PH 4W 60HZ 30 AMP. TO BE MADE AT: 30 P.S.A. 3 TO 3.5 P.S.A.
- 3) CONVEYOR DRIVE MOTOR 2 1/2 HP. 3450 RPM. 3 PHASE. 480V. 30 AMP. 60 HZ. WITH BALL BEARING AT UPPER MOST POINT OF THE MOTOR.
- 4) IF YOU HAVE CERTAIN FAB. HEIGHT, ADD DIFFERENCE BETWEEN STANDARD (17") AND CERTAIN FAB. HEIGHT TO STANDARD ELEVATION AND MACHINE HEIGHT.

20a 5FT  
CURRS that  
run together  
can repla  
the 8'



NOTE: SET THE BRIDGE OVER BETWEEN THE TWO 8' ENERGY ROLLER DRIVEN CONVEYORS TO SECONDARY LAD AS SHOWN IN ACCESSORY



NO.	REV.	DATE	BY	CHKD.	APP.
1					
2					
3					
4					
5					
6					
7					
8					
9					
10					
11					
12					
13					
14					
15					
16					
17					
18					
19					
20					